



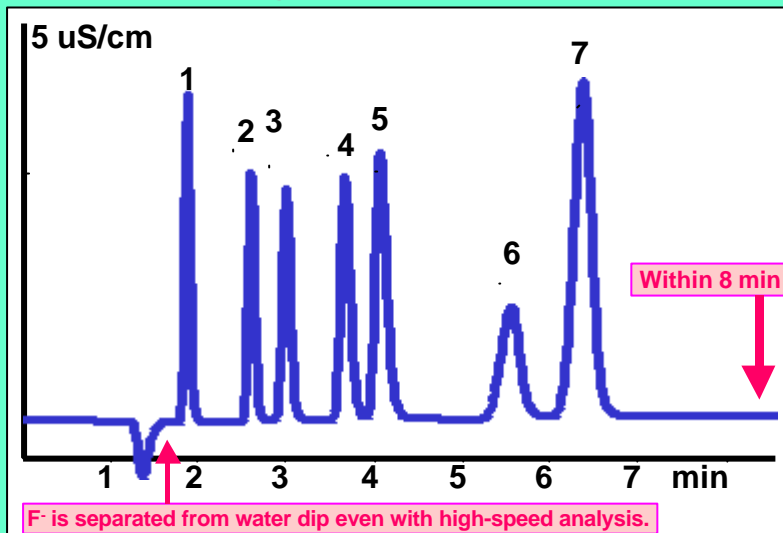
# Suppressed anion analysis

## Shodex IC SI series

### High-speed analysis

SI-90 4E

Suitable for general anion analysis



Column: **SI-90 4E** (4.0 ID x 250mm)  
 Eluent : 1.8mM Na<sub>2</sub>CO<sub>3</sub>  
           /1.7mM NaHCO<sub>3</sub>  
           (Isocratic)

Flow rate: **2.0 mL/min**  
 Column temp.: 25 deg.  
                   (Room temp.)

Column press.: **8 MPa**

Sample : 20 u L

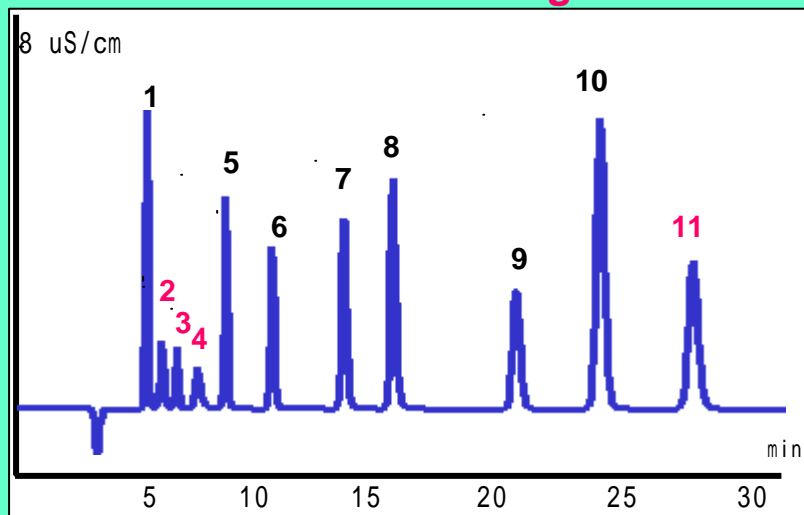
- 1. F           2 mg/L
- 2. Cl          3 mg/L
- 3. NO<sub>2</sub>       5 mg/L
- 4. Br          10 mg/L
- 5. NO<sub>3</sub>       10 mg/L
- 6. PO<sub>4</sub>       15 mg/L
- 7. SO<sub>4</sub>       15 mg/L



### Organic acids and Anions

SI-50 4E

Simultaneous analysis of organic acids and anions with high resolution



Column: **SI-50 4E** (4.0 ID x 250mm)  
 Eluent : 3.2mM Na<sub>2</sub>CO<sub>3</sub>  
           /1.0mM NaHCO<sub>3</sub>

Flow rate : 0.7mL/min

Sample : 20uL

- 1. F           2 mg/L
- 2. Acetate    10 mg/L
- 3. Formate    2 mg/L
- 4. Methacrylate 10 mg/L
- 5. Cl          3 mg/L
- 6. NO<sub>2</sub>       5 mg/L
- 7. Br          10 mg/L
- 8. NO<sub>3</sub>       10 mg/L
- 9. PO<sub>4</sub>       15 mg/L
- 10. SO<sub>4</sub>       15 mg/L
- 11. Oxalate    15 mg/L

Column type	ID×Length	Application
Shodex IC SI-90 4E	4.0×250 mm	For general analysis
Shodex IC SI-50 4E	4.0×250 mm	High performance of SI-90 4E and for the trace analysis
Shodex IC SI-90G	4.6×10 mm	Guard column for SI-90 4E and SI-50 4E

**Shodex**